



UPLAND
REAL ESTATE GROUP, INC.

3034 Lyndale Ave S
Minneapolis, MN
For Sale/Lease
ENTIRE BUILDING AVAILABLE

Your Logo

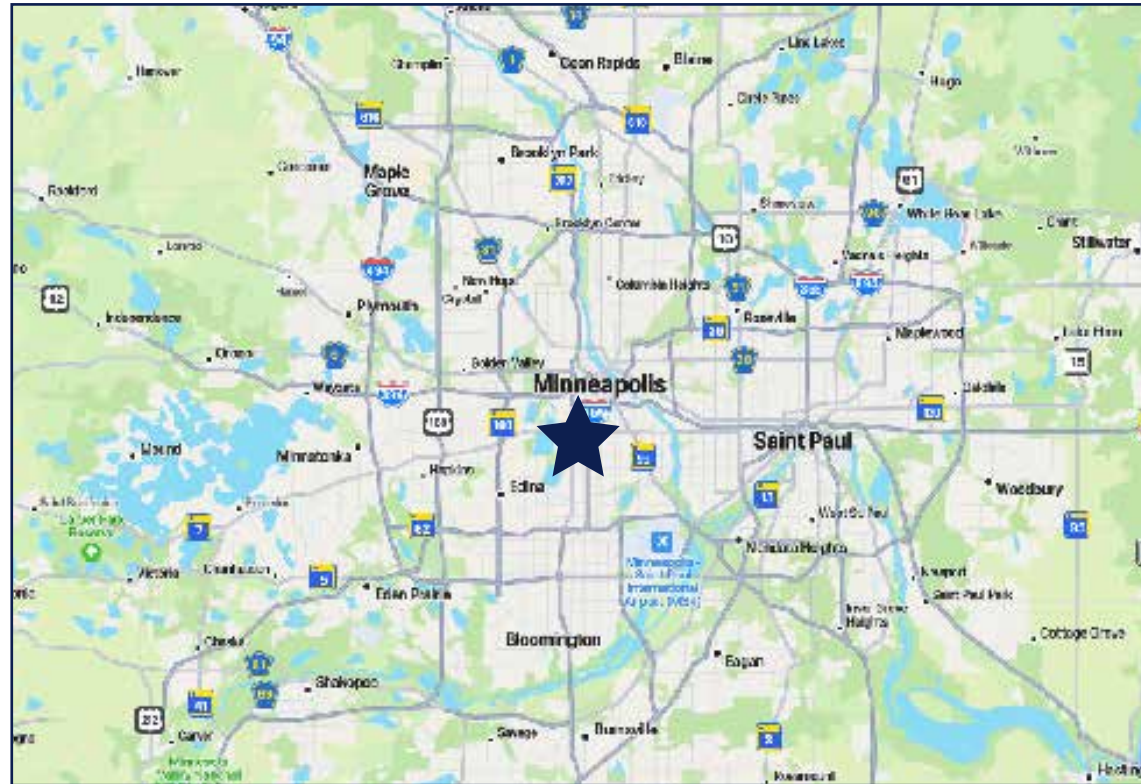
50 South 6th Street
Suite 1418
Minneapolis, MN
612.332.6600
www.upland.com

*Look Upland. Where
Properties & People Unite!*

CHAD STURM
612.436.1122
CHAD@UPLAND.COM

ADDRESS	3034 Lyndale Ave S
CITY, STATE	Minneapolis, MN
BUILDING SIZE	12,831 SF
SPACE AVAILABLE	12,865 SF
SUITE A	6,000 SF
SUITE B	2,660 SF
SUITE C	2,913 SF
UPSTAIRS - OFFICE	831 SF
LOT SIZE	0.57 Acres
LEASE RATE	\$25 PSF
TAX 2025	\$65,078.16
YEAR BUILT	1956
COUNTY	Hennepin
TRAFFIC COUNT	14,300 VPD in front of Building 30 Dedicated off street parking spots for Tenants & Customers
PARKING	

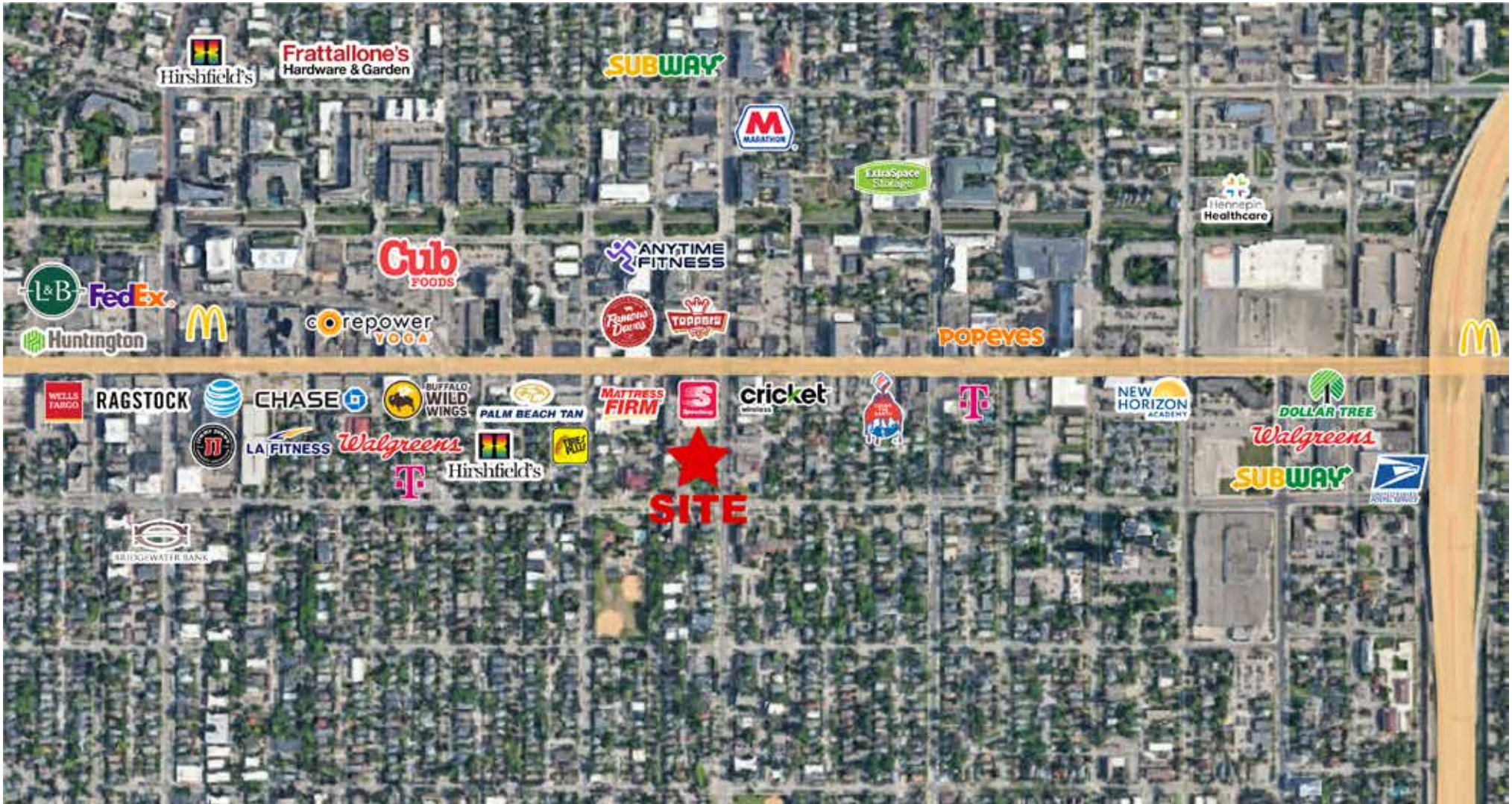
Can all be combined



2025 DEMOGRAPHICS	1-MILE RADIUS	3-MILE RADIUS	5-MILE RADIUS
POPULATION	45,735	244,543	513,811
MEDIAN AGE	31.5	34.6	34.2
MEDIAN HH INCOME	\$73,689	\$81,124	\$84,807
AVERAGE HH INCOME	\$103,957	\$118,494	\$123,512

HIGHLIGHTS

- Heavily populated urban dense neighborhood
- Thousands of apartment units within walking distance of the property
- Highly walkable area near local restaurants, shopping, entertainment, and bars
- Pylon signage







SECOND FLOOR OFFICE SPACE

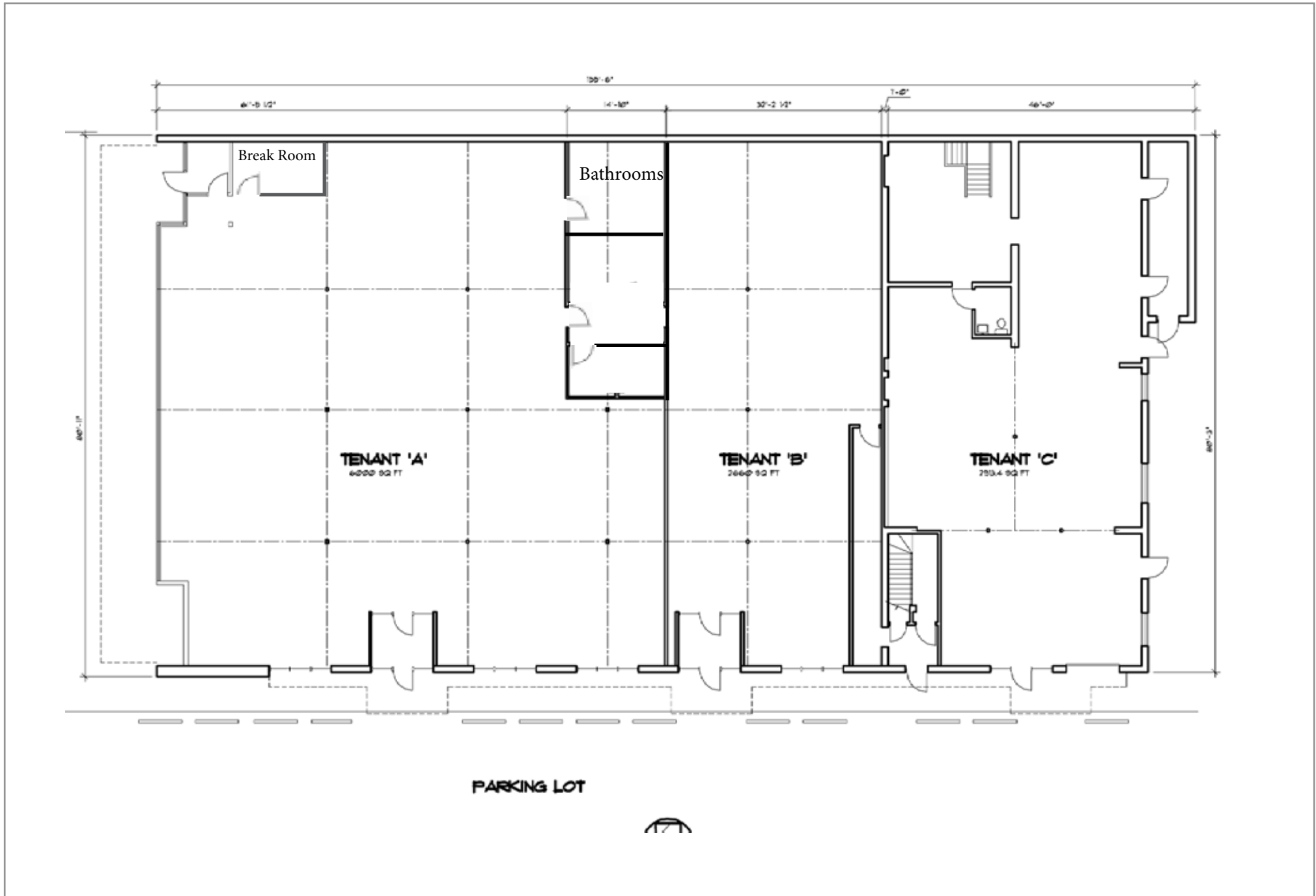
LOCATED 1 BLOCK SOUTH OF LAKE & LYNDALE

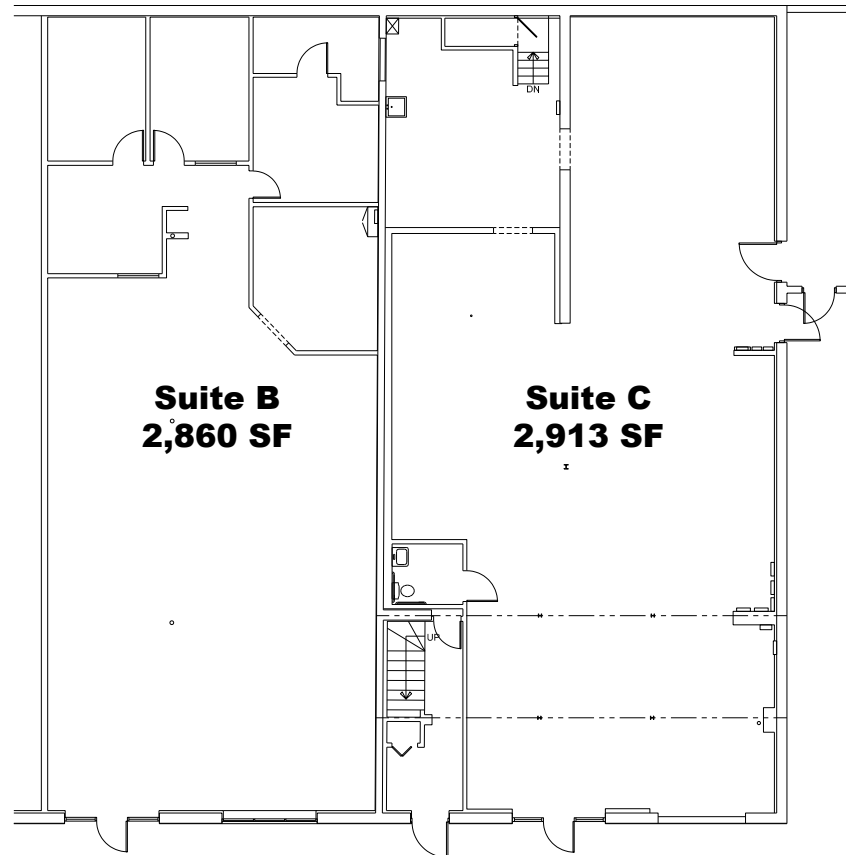


VACANT LAND READY FOR DEVELOPMENT

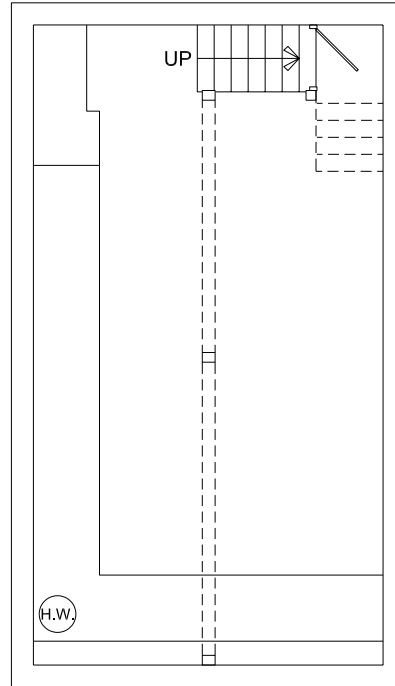
FRESH PAVED & STRIPED PARKING LOT







First Floor As-Built Floor Plan
3034 Lyndale Avenue South, Minneapolis, MN 55408
Date: 12-11-2023 Scale: NTS



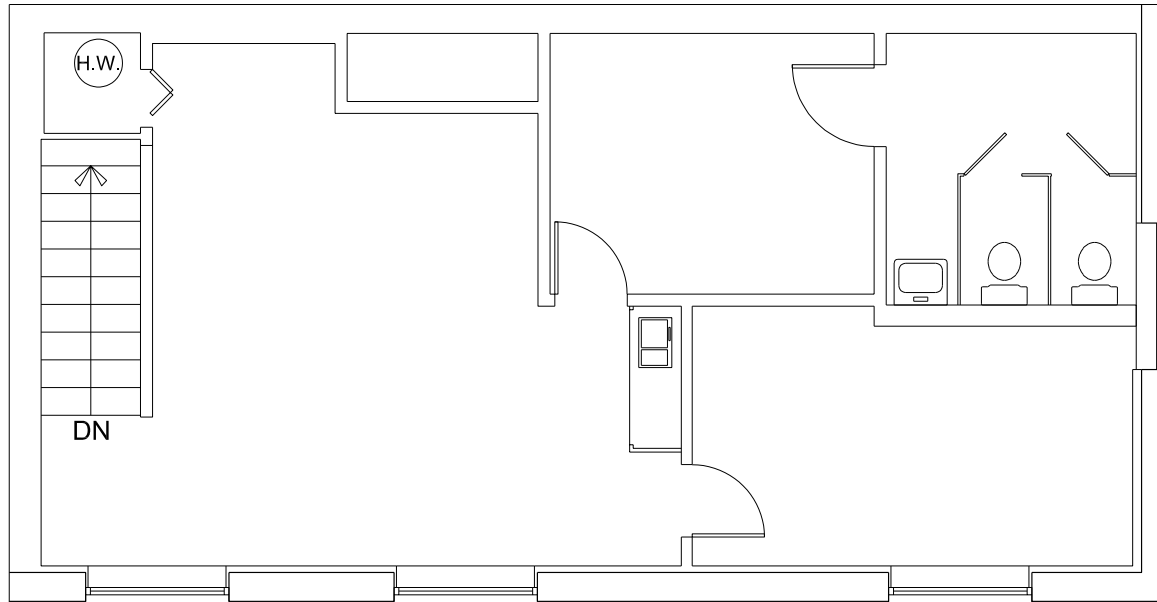
Lower Level As-Built Floor Plan

3034 Lyndale Avenue South, Minneapolis, MN 55408

Date: 12-11-2023

Scale: NTS

461 LOWER LEVEL SF



Second Floor As-Built Floor Plan

3034 Lyndale Avenue South, Minneapolis, MN 55408

Date: 12-11-2023

Scale: NTS

831 SECOND FLOOR SF

A photograph of a commercial building with a sign that says "Your Logo" and "For Sale/For Lease". The building has a white facade with three arched windows. A parking lot with yellow lines is in the foreground. A house is visible in the background.

Your Logo

For Sale/For Lease
Sam Gerlach
612-465-8529 UPLAND

UPLAND

REAL ESTATE GROUP, INC.

50 South 6th Street
Suite 1418
Minneapolis, MN
612.332.6600

CHAD STURM
612.436.1122
CHAD@UPLAND.COM

THIS INFORMATION HAS BEEN SECURED FROM SOURCES WE BELIEVE TO BE RELIABLE, BUT WE MAKE NO REPRESENTATIONS OR WARRANTIES, EXPRESSED OR IMPLIED, AS TO THE ACCURACY OF THE INFORMATION. REFERENCES TO SQUARE FOOTAGE OR AGE ARE APPROXIMATE. UPLAND HAS NOT REVIEWED OR VERIFIED THIS INFORMATION. BUYER MUST VERIFY THE INFORMATION AND BEARS ALL RISK FOR ANY INACCURACIES.